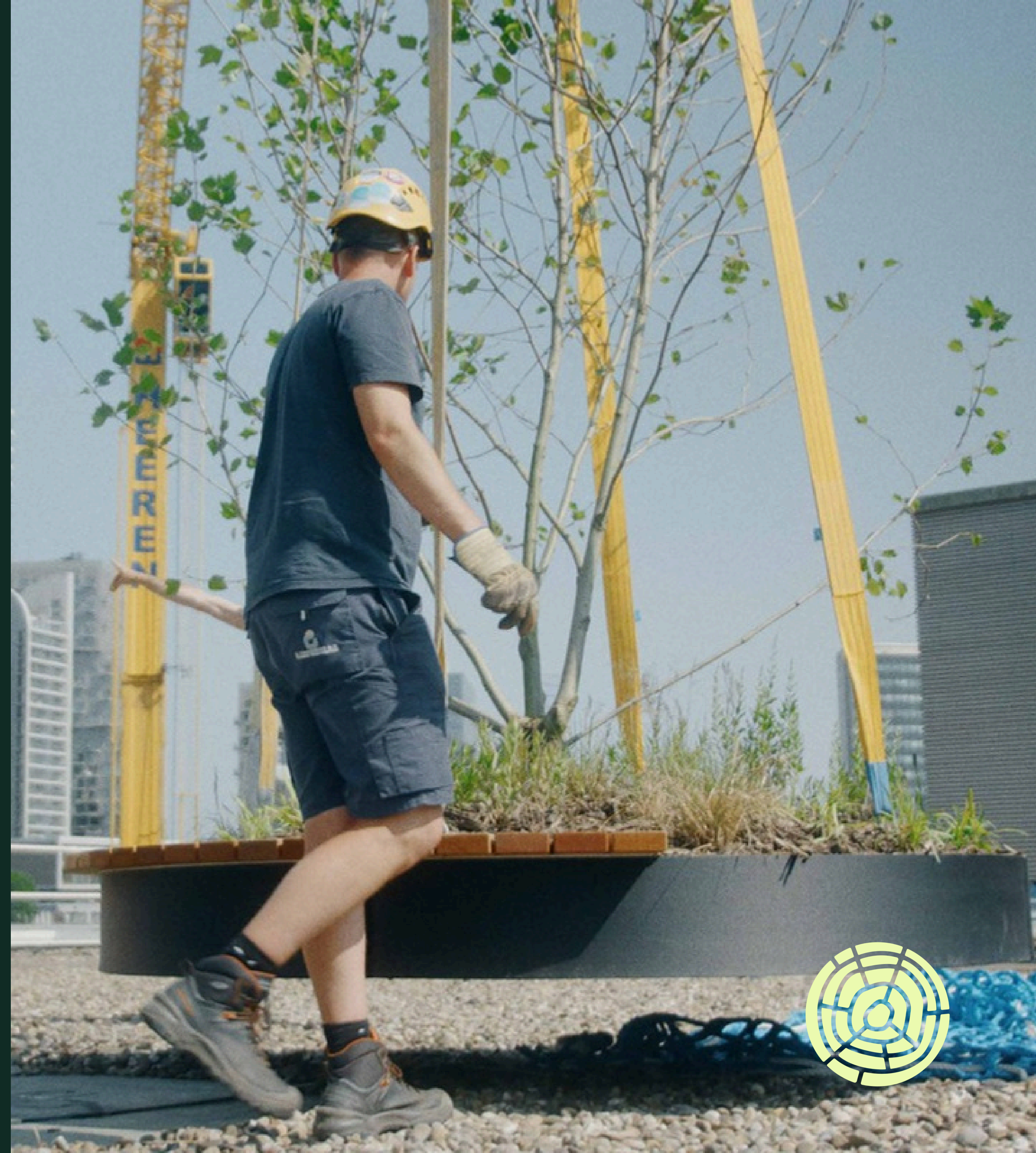
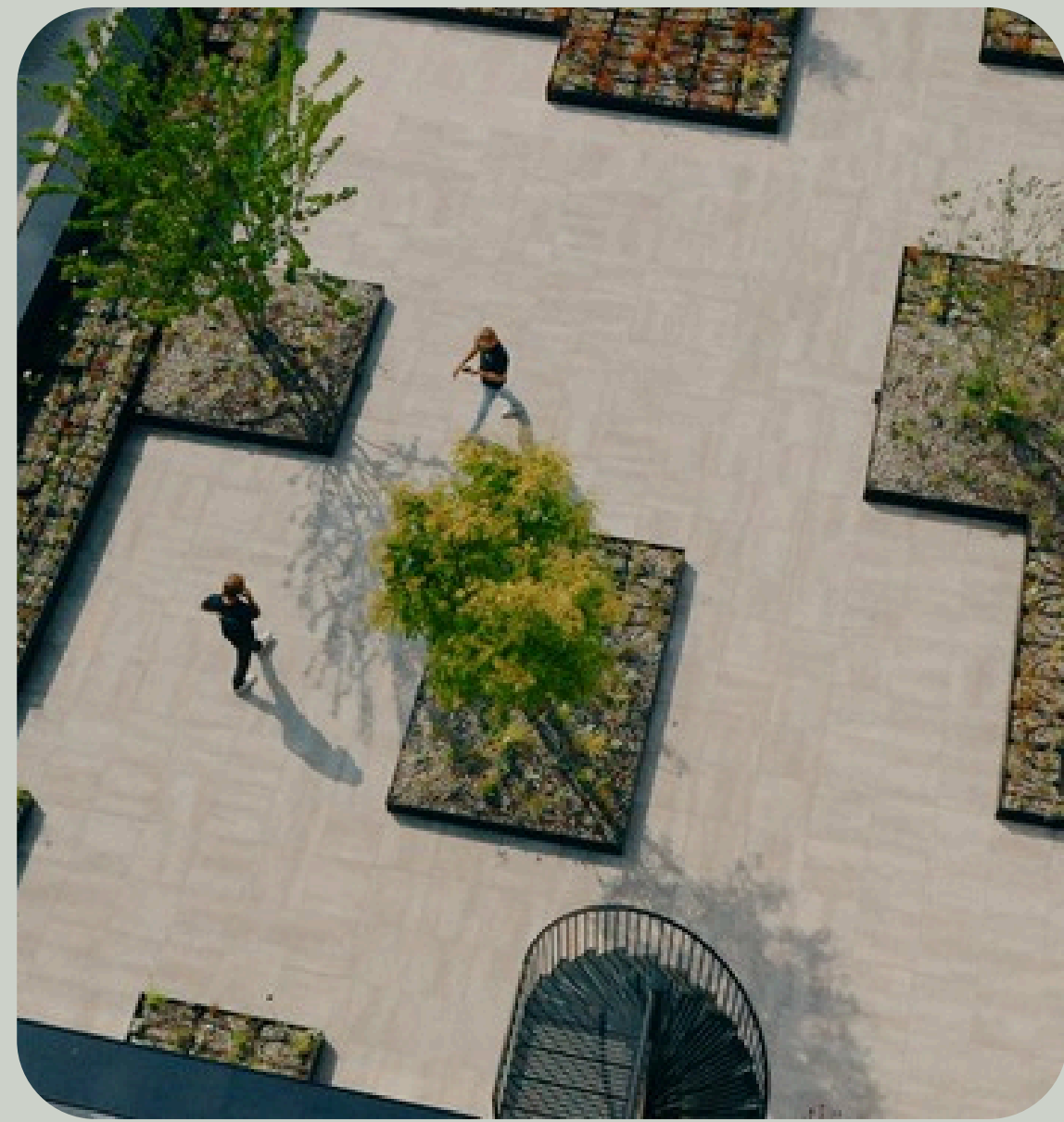
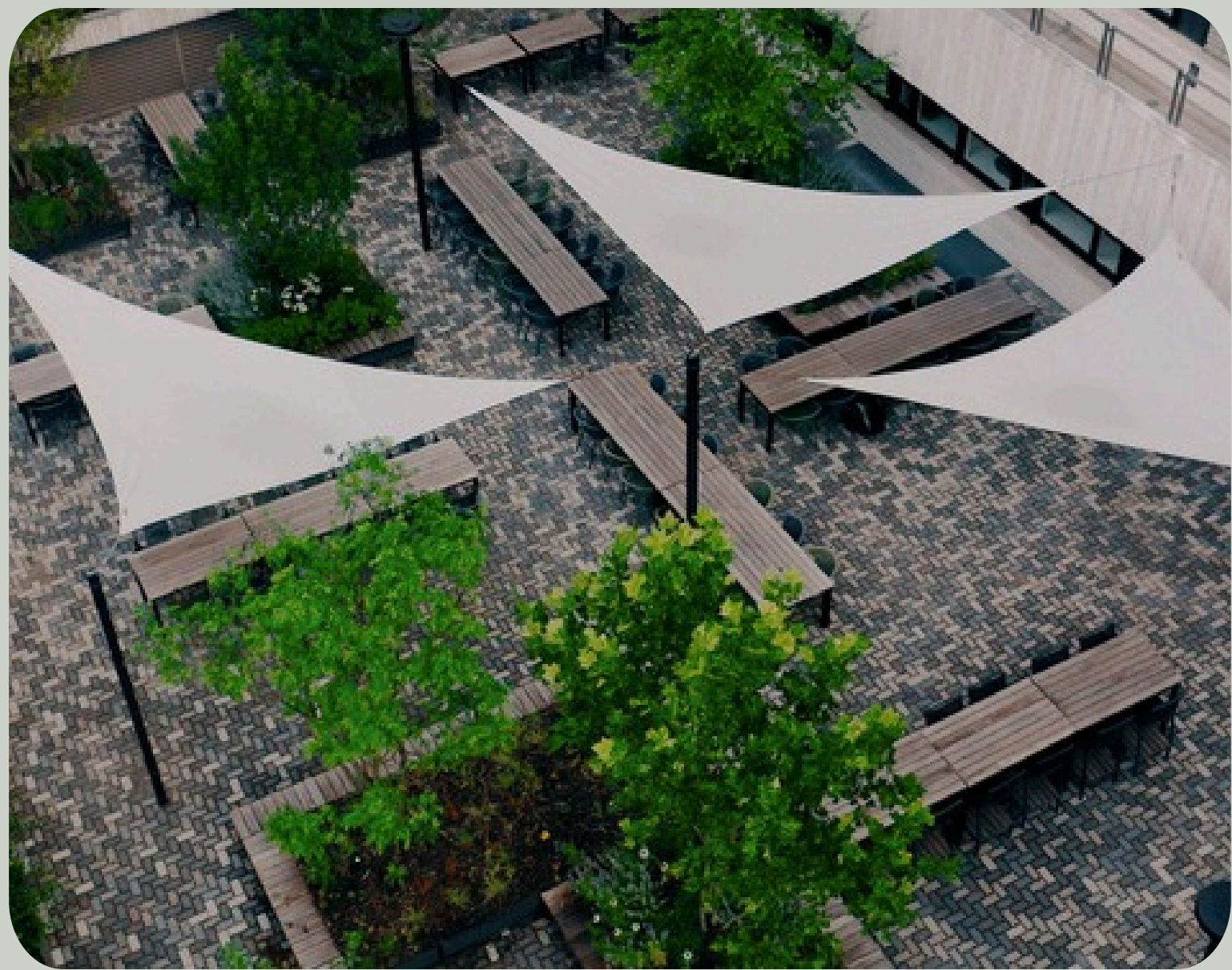
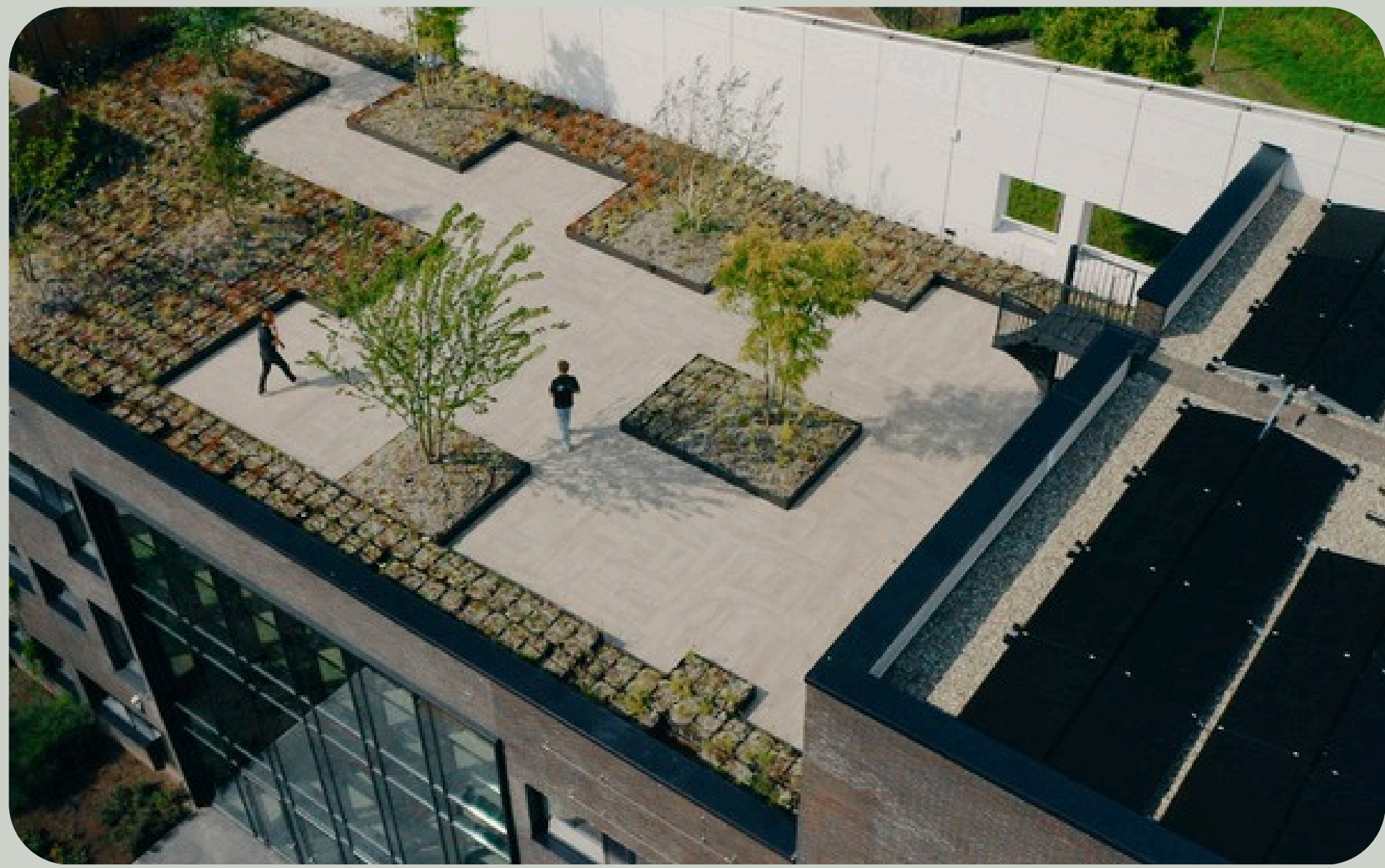


jungleblocks®

Modular pieces of landscapes,
shaping lightweight jungles.



jungleblocks®



Designed To Fit. Built To Grow.

The most enchanting rooftops make you forget you are on a roof. Until you notice the stunning view on its surrounding.

jungleblocks® are designed for lightweight and modular landscaping in urban environments, whenever conventional planting is not an option. With a storm-proof construction and maximum saturated weight of 250kg per m2, jungleblocks® enable trees, shrubs and perennials to be placed on and around buildings in no time.

The construction is made out of recycled consumer waste. Thanks to 3D printing technology, jungleblocks® can be delivered in almost any size, shape and colour, providing maximum design freedom to the client. The plug and play installation ensures speedy execution on site, and flexibility for temporary removal in case of maintenance.

theurbanjungleproject



250^{kg}

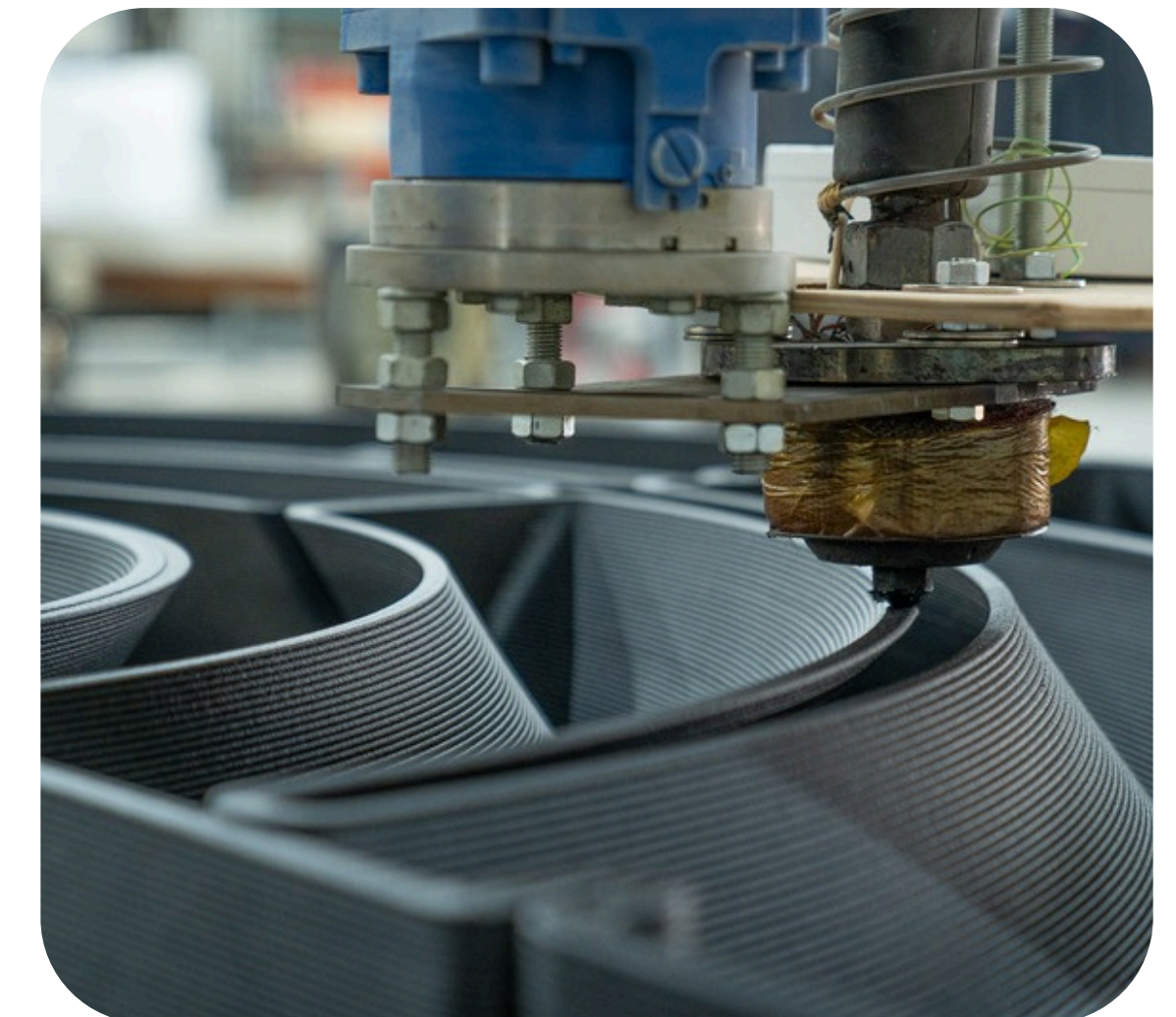
Maximum Weight per m2

Designed to meet the weight constraints on most buildings, and to be placed plug and play without anchoring to the subsurface.

-140^{kg}

Net Carbon Footprint

3D printed out of recycled consumer waste and hence fully circular, while contributing a negative carbon footprint.



Lightweight, Modular, Circular & Safe



Construction

Size 240x240x25 (square or round), custom sizes on request

Material post consumer waste polypropylene

Colour carbon black (standard), custom color upon request

Weight

Dry (minimum) 585kg (round) // 740 kg (square)

Saturated (maximum) 1130kg (round) // 1390kg (square)

Max construction load 250kg/m²

Retention Capacity 113 liter/m²

Safety

Max Wind Pressure storm-proof, compliant with NEN-EN 1991-1-4

Other safety Fire retardant, UV protected material

Plug & Play installation and relocation

Transportation

Horizontal Full Truck Load = 12 jungle blocks

Vertical vertical transport via crane (lifting eyes incl)

Installation

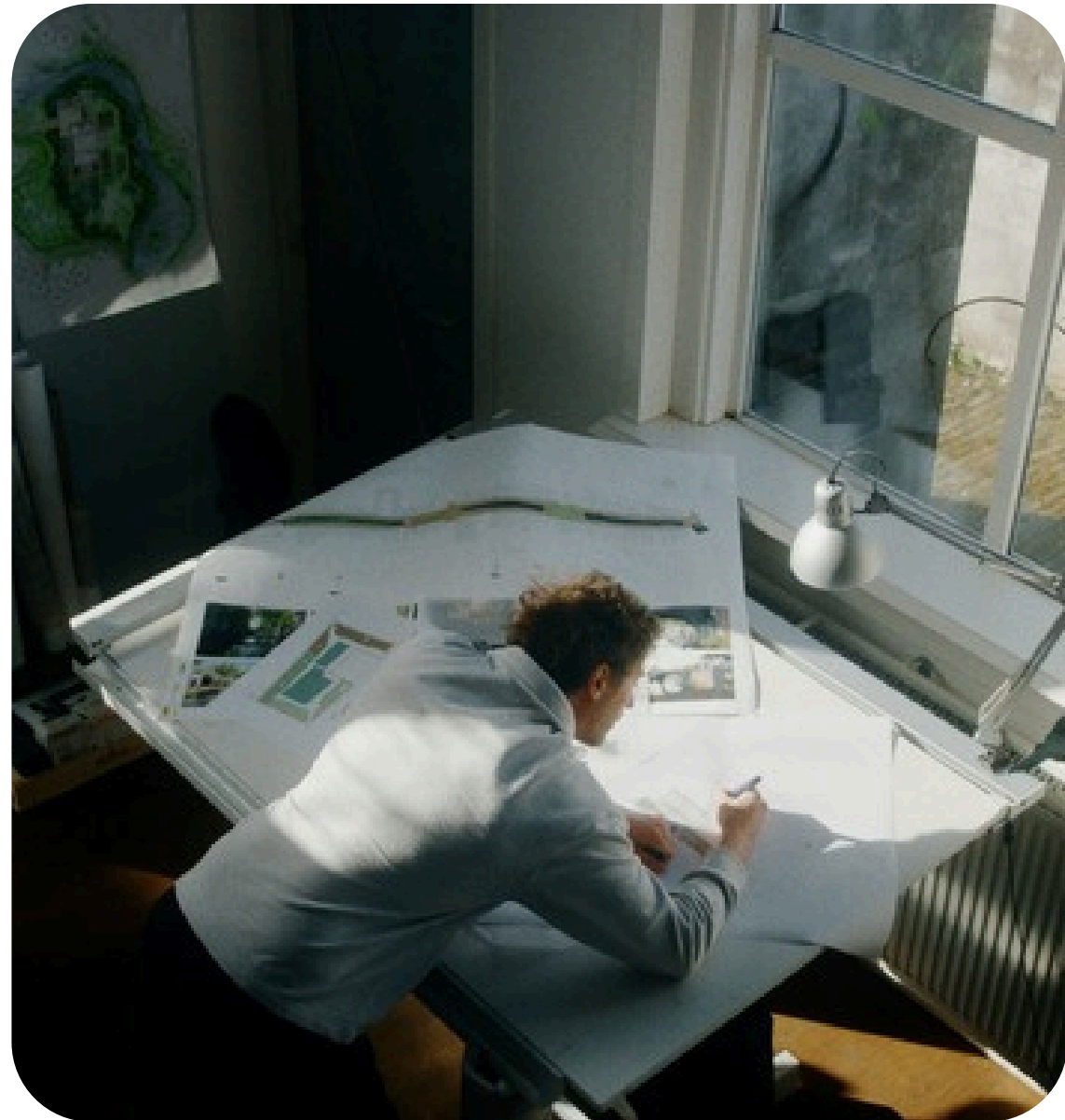
Assembly Trees are anchored in Jungle Blocks, substrate is topped off, plants mulch and dripline are installed

Placement Plug & Play installation on rubber spacers
no anchoring to subsurface required

Installation Sensor is placed, irrigation supply is connected and tested, nutrition supply added



jungleblocks®



Minimum footprint, Maximum impact



Ecology

Substrates Argex, Jungle Mix & Fungi Mulch

Tree shape & size multistemmed, 350 - 600 cm

Species wide variety of [native] species,
depending on local conditions a.o:

- Acer campestre
 - Alnus glutinosa
 - Betula nigra
 - Gleditsia triacanthos
 - Platanus x hispanica
 - Pyrus calleryana
 - more species on request
-

Shrubs C2 - C5, species depending on local conditions

Perennials P9 - P12, species depending on local conditions

Footprint

Carbon footprint -140kg CO2

Green as a service

Monitoring & maintenance



Automation

| | |
|---------------------|---|
| Irrigation delivery | 113L/m ² incorporated water retention automated via irrigation system (preferred) manually in public space (not preferred) |
|---------------------|---|

Remote Monitoring

| | |
|-----------------|---|
| Irrigation | functioning and optimisation of irrigation supply |
| Sensors | soil temperature & humidity, EC, battery level |
| Weather station | local conditions like outside temperature, air humidity, windspeed, precipitation |

Service

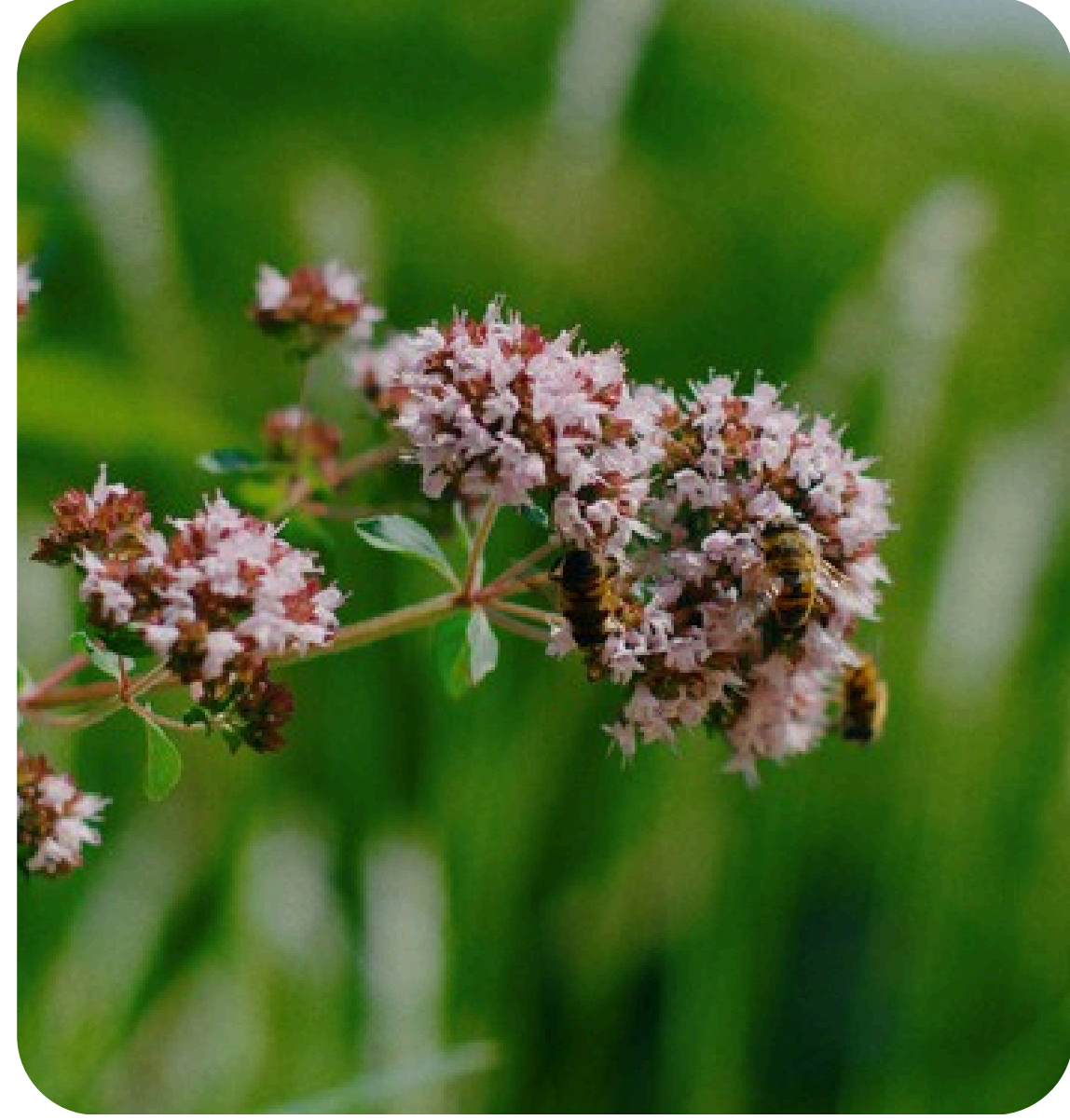
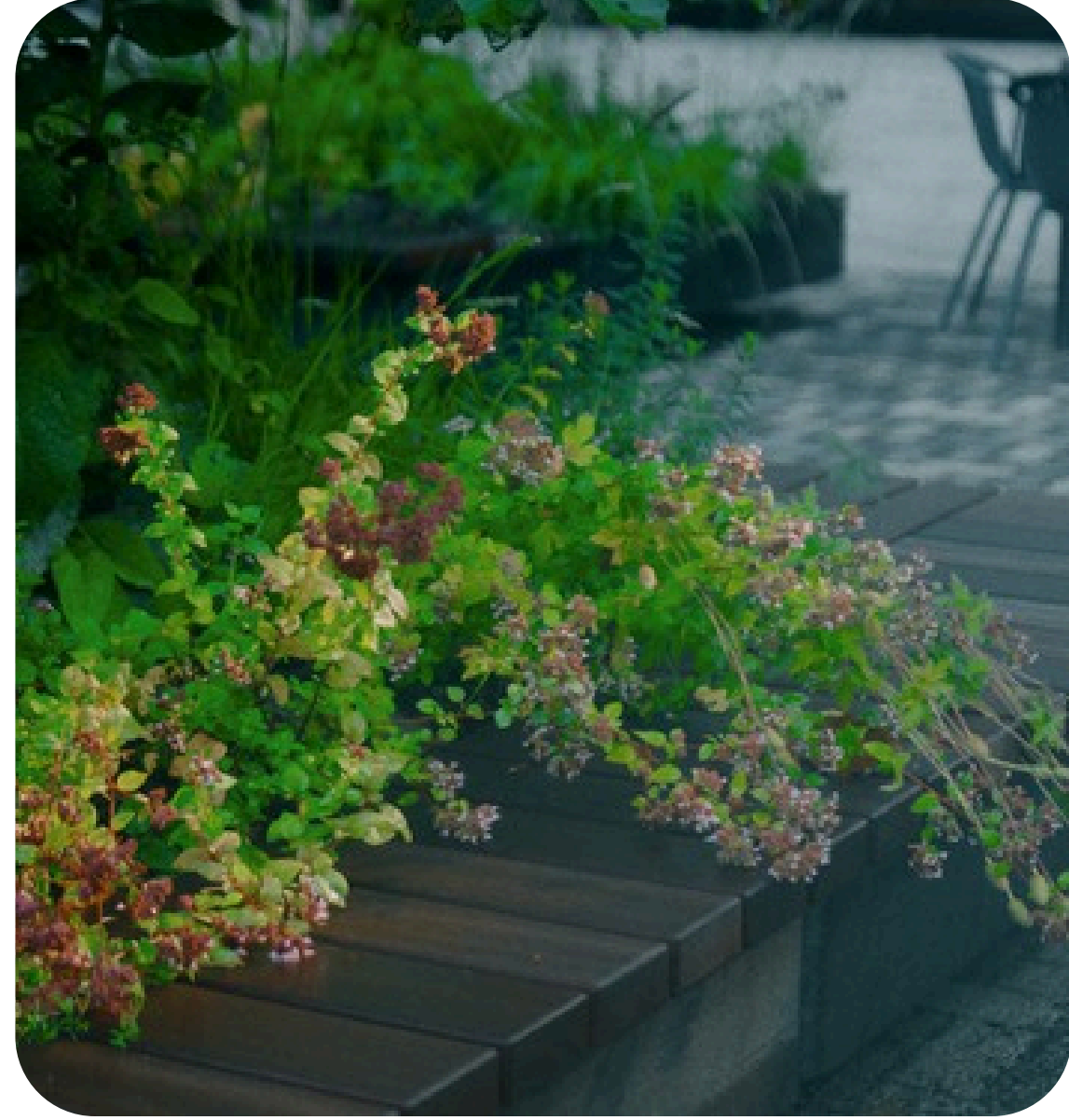
| | |
|-------------|---|
| Maintenance | visual checkups, plant health assessments, pruning, weed removal, soil monitoring, nutrition supply, cleaning |
| Guarantees | plant replacement in case of failure or severe loss |



Scan to view demo dashboard
of Green as a Service monitoring



jungleblocks®



jungleblocks®

| Pricing April 2026* | Square standard with tree | Round standard with tree | Rectangle standard with tree | Custom (per m2) custom with tree |
|--|--|--|--|--|
| Construction sizes | 240 x 240 x 25 cm | ø240 x 25 cm | 240 x 120 x 25 cm | Custom, min 2m2 |
| Custom engineering | - | - | - | € 500 per element |
| Custom colour | € 200 per element | € 150 per element | € 125 per element | € 35 per m2 |
| Plants standard species | multi-stemmed tree & perennials, custom species on request | multi-stemmed tree & perennials, custom species on request | multi-stemmed tree & perennials, custom species on request | multi-stemmed tree & perennials, custom species on request |
| Timber bench Guariuba FSC wood | € 600 per 1/4 bench | € 800 per 1/3 bench | € 600 per 1/4 bench | on request |
| List price | € 5.400 | € 4.600 | € 3.500 | € 1.325 |

*All prices exclude VAT, transportation, installation and irrigation supply

Green as a Service

| Pricing April 2026* | Annual fee per element, per year |
|---|--|
| Sensor monitoring Monitoring of soil humidity and temperature, including sensor hardware, installation, data traffic & issue alerting | € 100 per sensor |
| Project monitoring Monitoring of sensor data, irrigation data and nearest weather station via API integration, dashboard access & issue alerting | € 500 per project |
| Soil monstering Sampling and lab assessment of soil quality, including health report | € 150 per sample |
| Tree Health Assessment Qualitative on site health assessment and report by European Tree Worker, excluding travel costs | € 150 per tree |
| Project maintenance On site visits, visual checkups, plant health assessments, pruning, weed removal, soil monstering, nutrition supply, cleaning | On request |
| Growth Guarantee Plant replacement in case of failure or severe loss, only in combination with sensor monitoring and maintenance | 5% of product price |

*All prices exclude VAT and are indexed every year based on the CPI of CBS

A Single Tree is Not a Jungle,
but Every Jungle Starts
With a Single Tree



jungleblocks®

Modular pieces of landscapes,
shaping lightweight jungles.



Scan for 3D models, tech specs,
engineering reports and more

