

PRICING - MAY 2025

URBAN TREE

All prices are indicative

Detailed quotes available on request

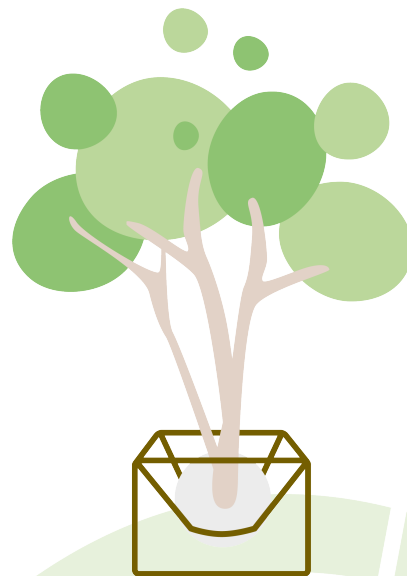
Prices exclude shipping and VAT



THE
URBAN
JUNGLE
PROJECT

URBAN TREE

Urban Tree	€ 5.500
Frame material	Coated steel
Frame colour	RAL9004 (signal black)
Frame sizes	120 x 120 x 80cm
Total weight	360kg or 250kg/m2
Tree height	350-600cm
Tree specs	Multistemmed, standard species
Irrigation delivery	Integrated dripline
Urban Tree + bench	€ 7.000
Total weight	440kg or 131kg/m2
Bench finishing	Kebony wood (or similar)
Frame sizes	183 x 183 x 80 / 45cm



FOUNDATION

Foundation construction

A foundation construction is required to prevent Urban Trees from tipping over in case of heavy wind.

For application on roofs, we highly recommend applying a modular foundation construction as alternative for anchoring through the roof, to prevent leakages and remain flexible in case of maintenance.

Modular foundation	€ 800
Construction material	Fibreglass
Construction size	244 x 244 x 4cm
Counterweight	16x Jungle Box or alternative (not included)
Total weight	1.043 or 175kg/m2 (saturated, incl. Urban Tree)
Maximum wind load	1,78kN/m2

Anchoring

The Urban Tree frame has diagonal strips for anchoring the frame to flat surfaces to prevent Urban Trees from tipping over in case of heavy wind.

Anchoring is only recommended for undergrounds where this does not impact the waterproofness of the surface below (which is the case on roofs for instance).

The Urban Jungle Project can not be held responsible for damages and accompanied claims as a result of anchoring to the surface below the Urban Tree. The modular foundation construction provides an alternative for all cases where anchoring is not possible or desired.